

# REGIONAL CONNECTIONS: ACE AND SAN JOAQUINS

Senate Committee Hearing on High-Speed Rail Business Plan  
March 16, 2021

Stacey Mortensen, Executive Director



# California Statewide Integrated Passenger Rail and Bus Services Planned for 2028



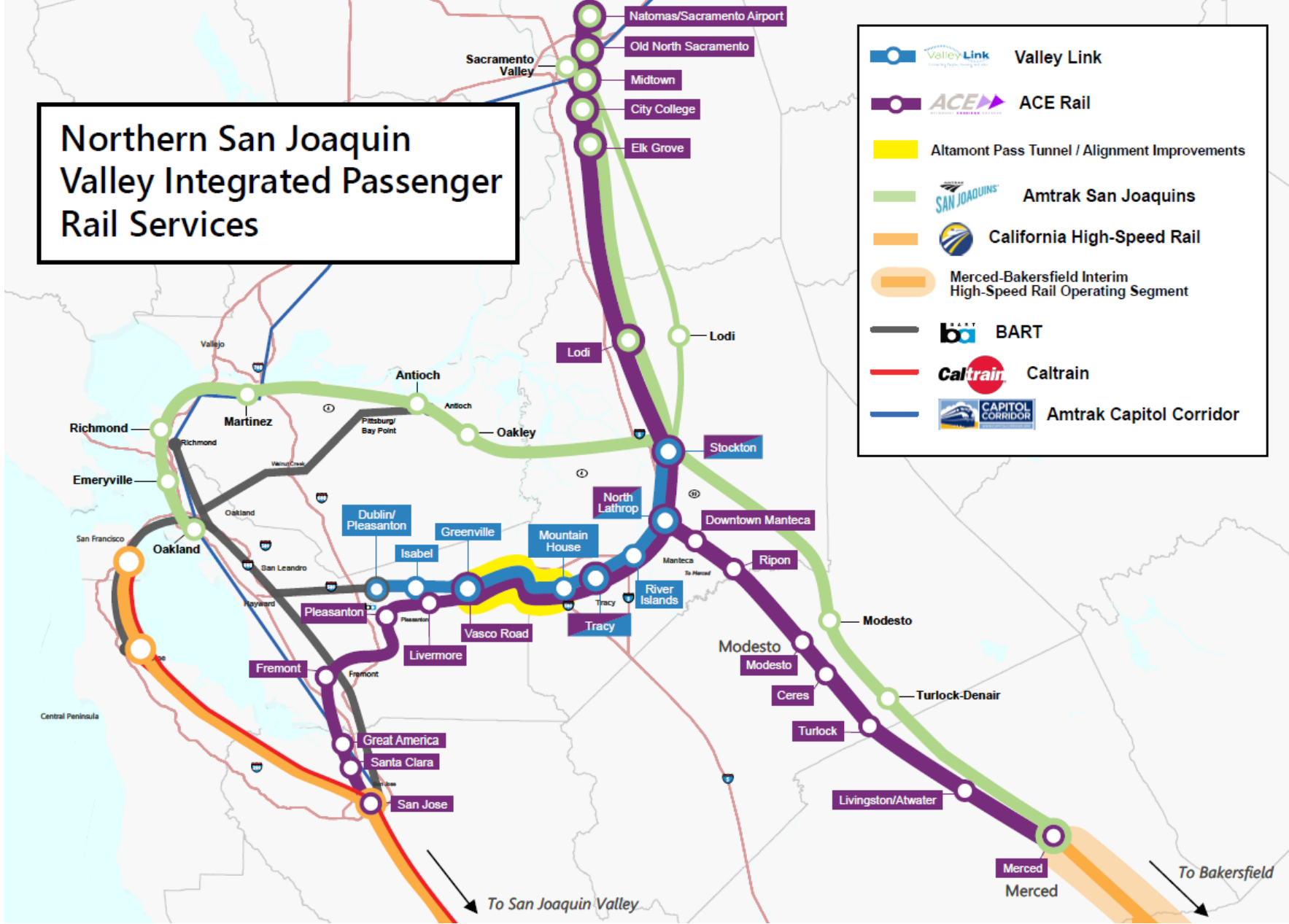
**Legend**

-  ACE Rail
-  San Joaquins
-  California High-Speed Rail Merced-Bakersfield Interim Operating Segment
-  Valley Link
-  BART
-  Caltrain
-  Capitol Corridor
-  Pacific Surfliner
-  Victorville to Las Vegas High-Speed Rail
-  Connecting Bus Route




# Northern San Joaquin Valley Integrated Passenger Rail Services

- Valley Link
- ACE Rail
- Altamont Pass Tunnel / Alignment Improvements
- Amtrak San Joaquins
- California High-Speed Rail
- Merced-Bakersfield Interim High-Speed Rail Operating Segment
- BART
- Caltrain
- Amtrak Capitol Corridor

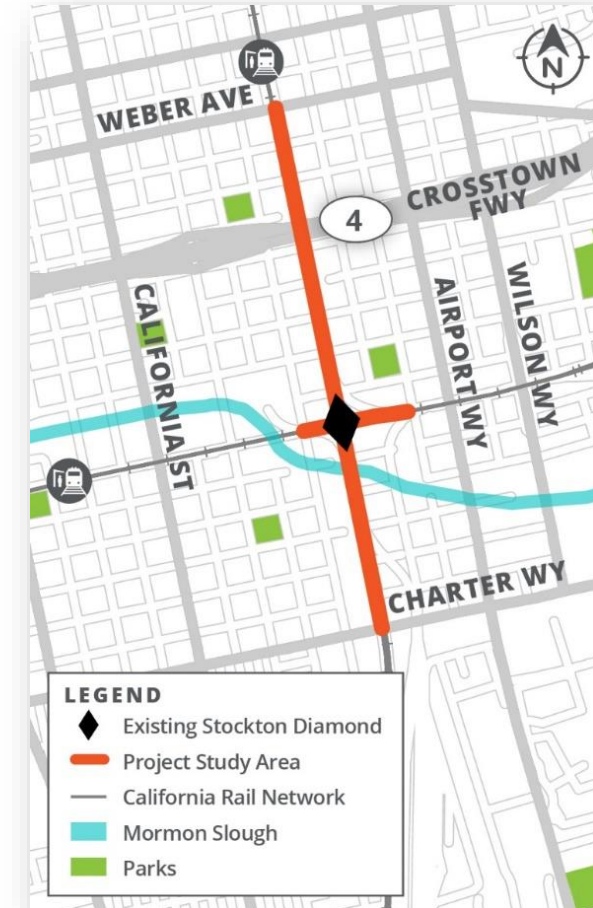


# Stockton Diamond Grade Separation



*Busiest, most congested at-grade rail crossing in CA*

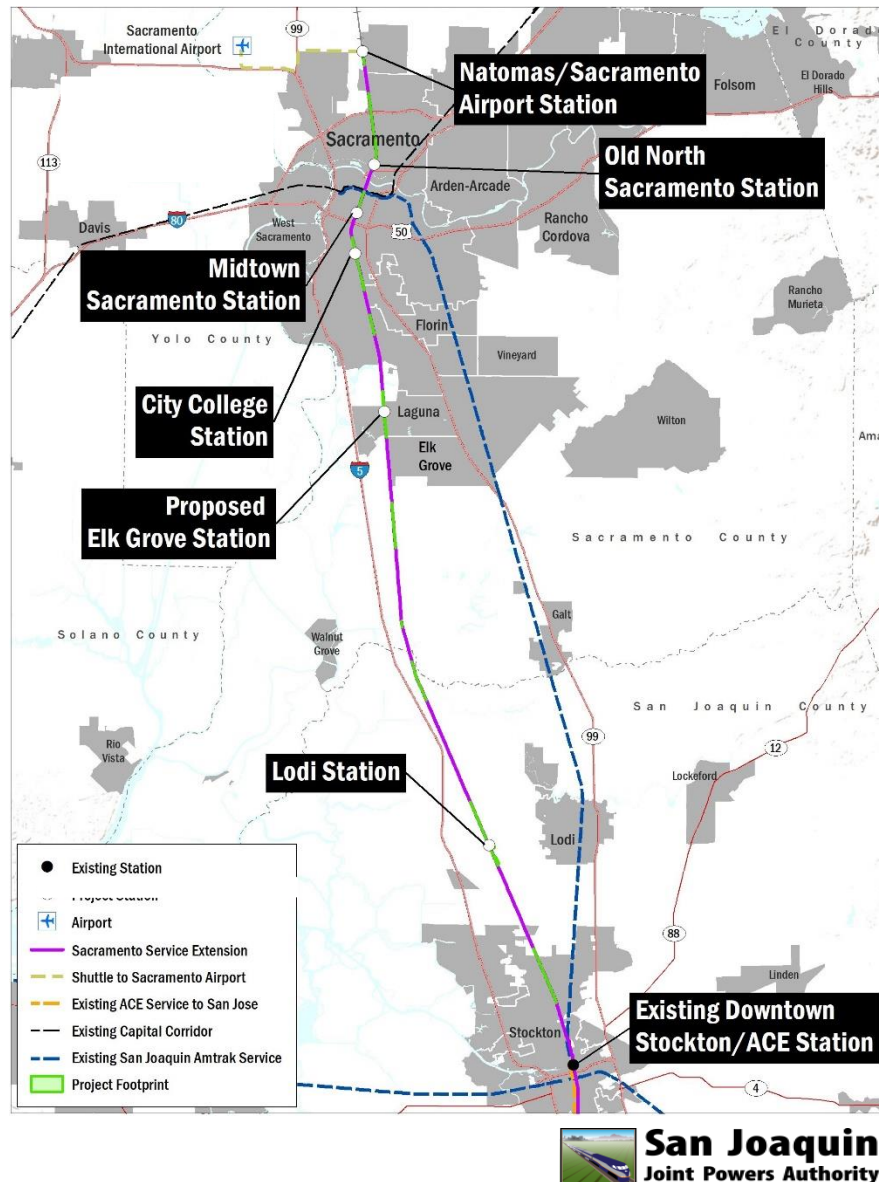
- Causes significant **congestion** and **delays** to service
- Impacts **frequency**, **reliability** and potential **expansion**
- Causes local **crossing delays**



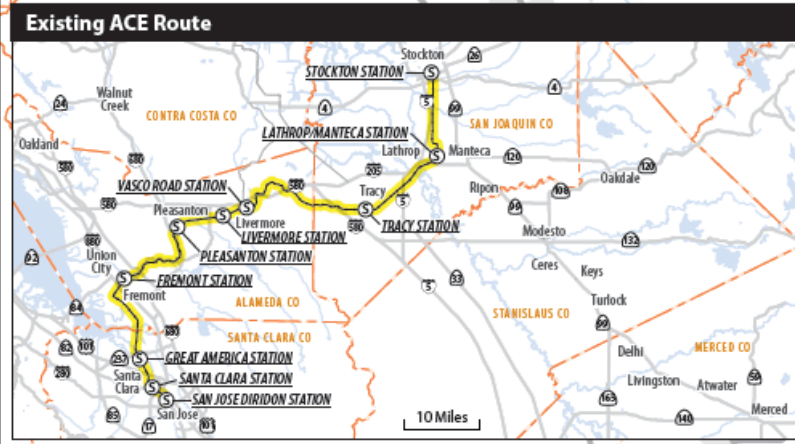
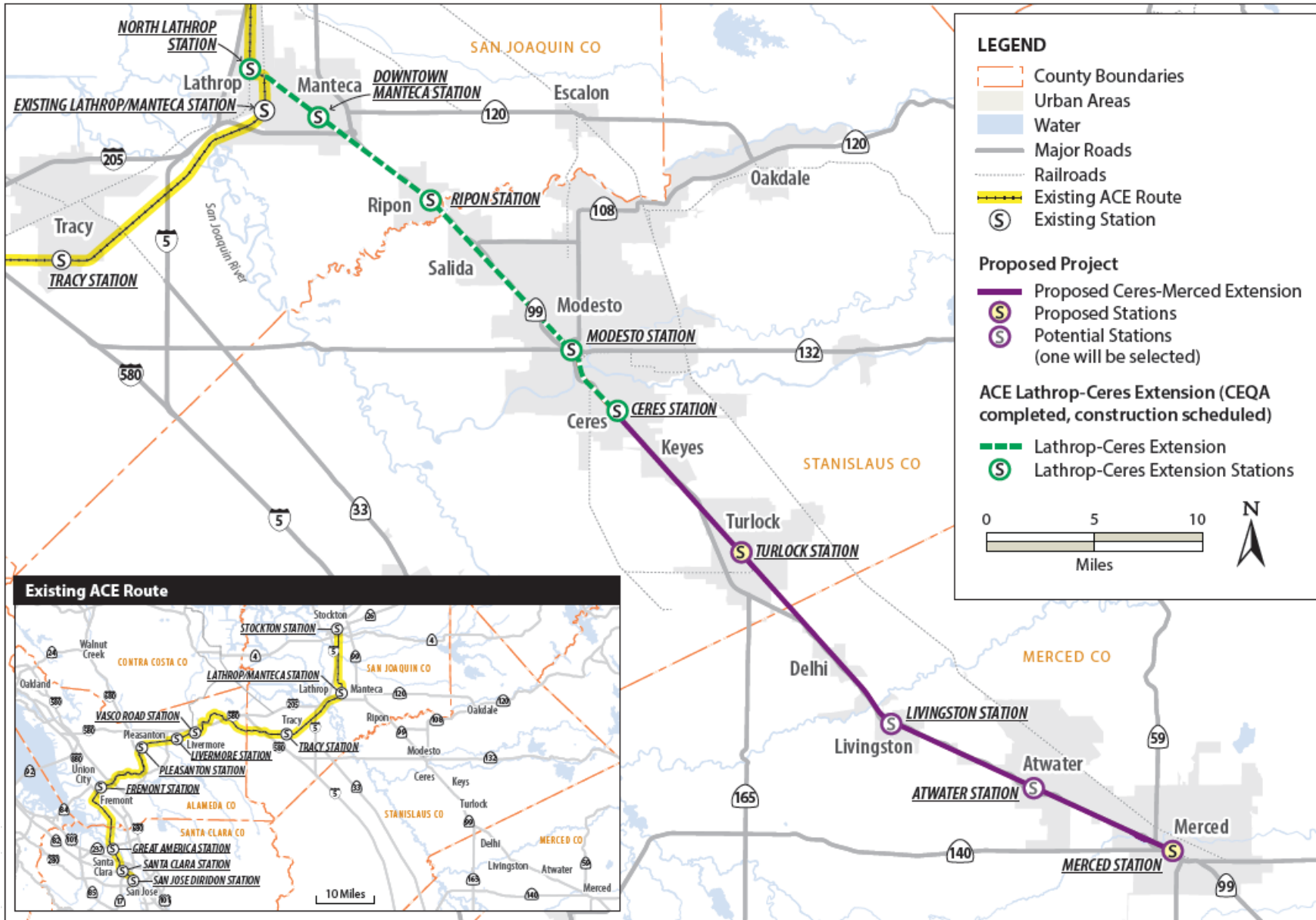
# Flyover Concept Rendering



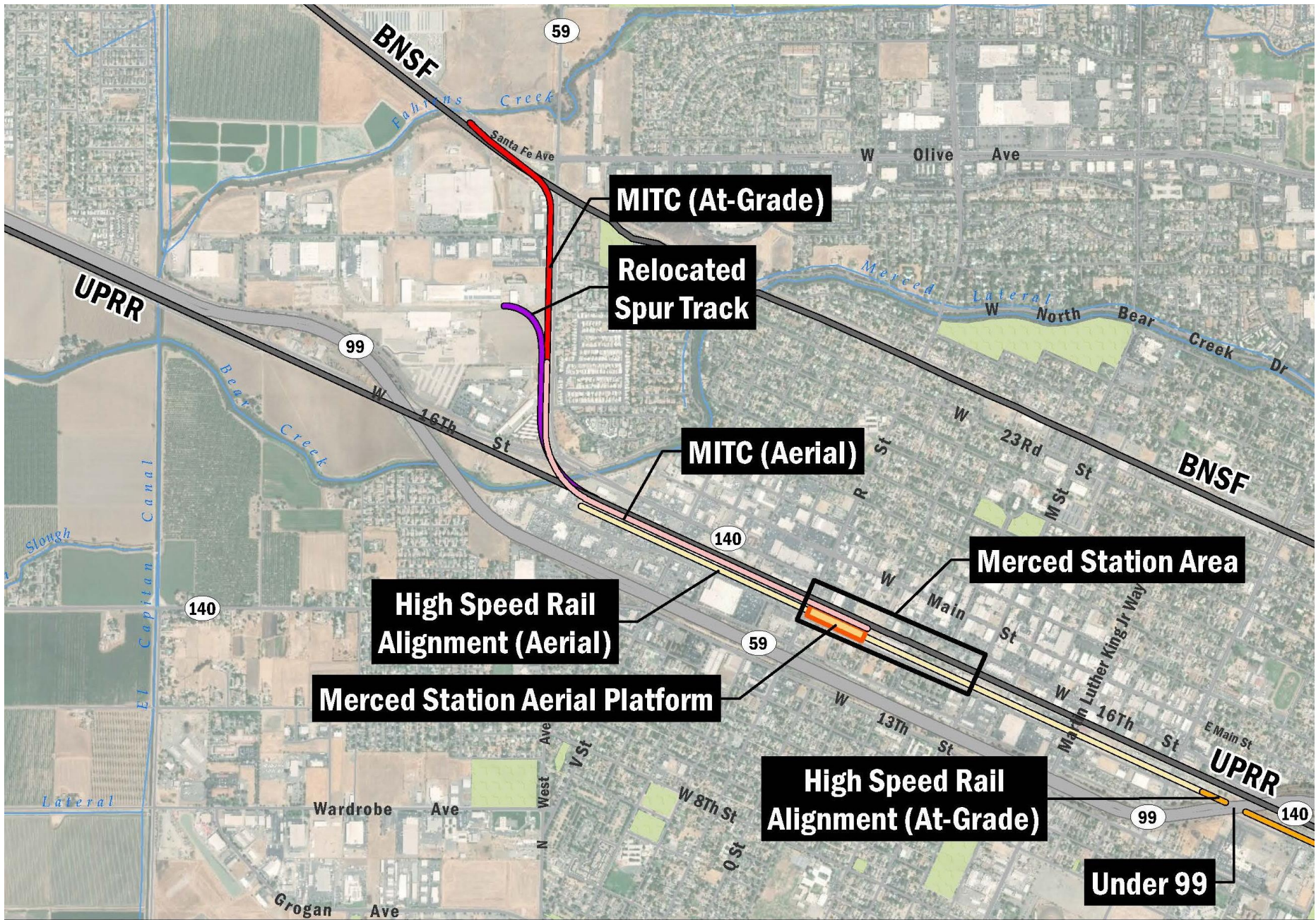
# Overview of the Sacramento Extension (Wave 2)



- Focused on eastern rail line with capacity to support additional San Joaquins service and new ACE service
- Higher train speeds, frequencies and connection to Sac Airport
- Working with Butte CAG and SACOG to plan for further extension north to Yuba City/Marysville and Butte County

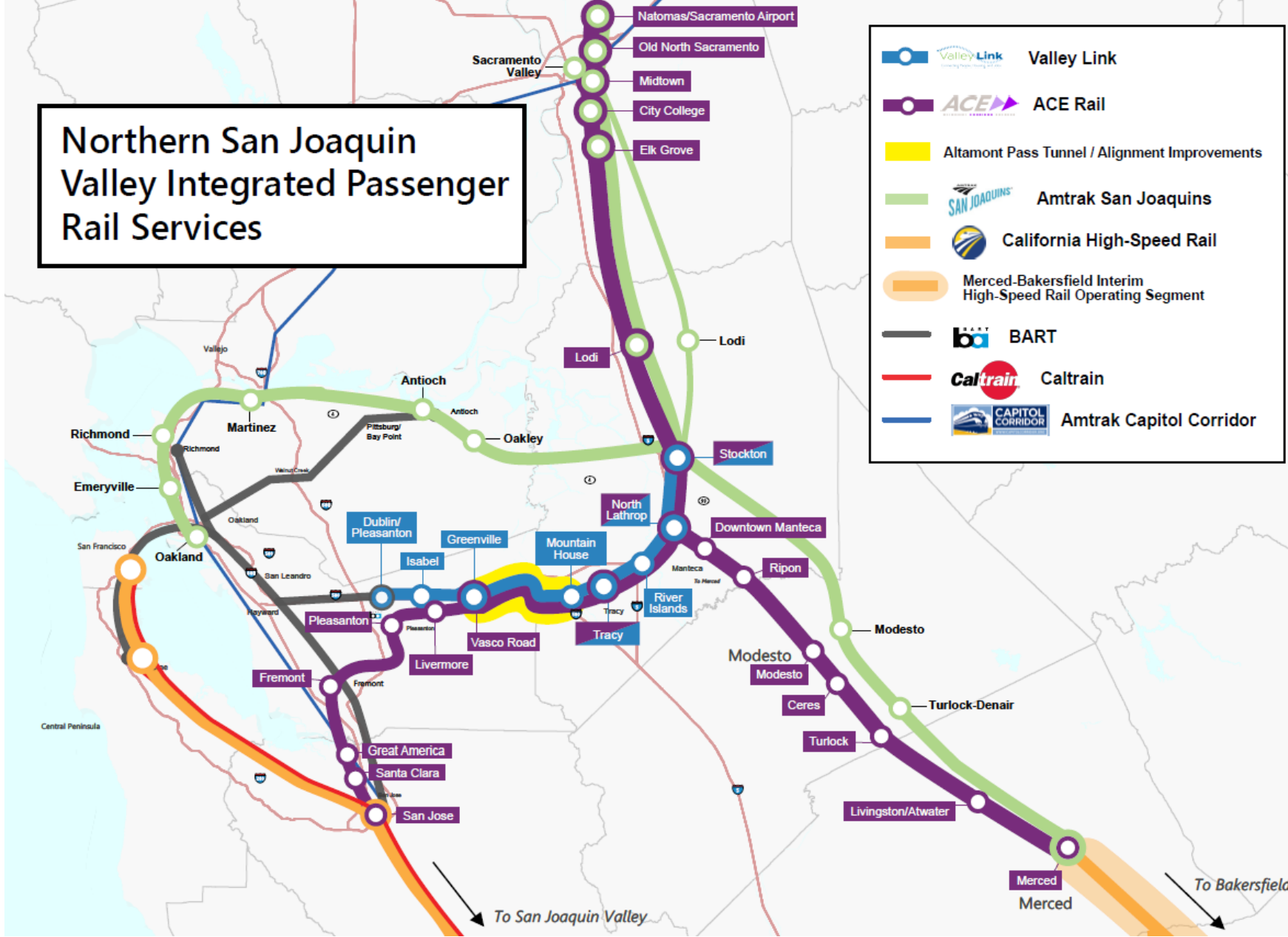


# MITC Alignment





# Northern San Joaquin Valley Integrated Passenger Rail Services



\$1.3B in hand for Merced to Natomas out of \$1.8B needed

6 locomotives/21 Rail Cars on order

Stockton Diamond Grade Separation:

- NEPA Fall 2021
- Engineering Early 2022

Waves 1 & 2 Construction Beginning in 2022