



LOSSAN Rail Resiliency and Realignment

Hasan Ikhata, Chief Executive Officer
Danny Veeh, Rail Planning Program Manager
Subcommittee on LOSSAN Rail Corridor Resiliency
May 16, 2023

About SANDAG

A topographic map of the San Diego region, showing the coastline, major cities, and surrounding terrain. The map is overlaid with a semi-transparent blue and white header and footer.

FEDERAL

Metropolitan Planning Organization

STATE

Regional Transportation Planning Agency

LOCAL

Regional Transportation Commission

LOSSAN SAN DIEGO SEGMENT

Responsible for planning, funding, and construction of capital projects

The San Diego region is home to...

- over 3.3 million people
- \$240 billion economy
- 18 cities and the county of San Diego
- 17 tribal governments
- U.S. – Mexico border
- major military installations

Agenda



LOSSAN Corridor's Importance to the San Diego Region



Vulnerable Coastal Bluffs



SANDAG's Plans and Commitments



Next Steps



The background of the slide is a dark purple gradient. Overlaid on this is a large, semi-transparent diamond-shaped warning sign. The sign has a dark border and contains the text "DANGER" at the top, "ACTIVE BLUFF" in the middle, and "FAILURES" at the bottom, all in a light-colored, sans-serif font. The sign is slightly tilted and appears to be set against a background of a rocky, uneven terrain.

LOSSAN Corridor's Importance to the San Diego Region

San Diego's Only Rail Connection

San Diego depends on LOSSAN

- 1 in 7 CA intercity passengers are in San Diego
- 3 of top 10 CA intercity ridership stations in San Diego County

LOSSAN is impacted by San Diego

- Bottlenecks cause delays, limit schedules across Southern California



The LOSSAN (Los Angeles – San Diego – San Luis Obispo) Rail Corridor

Economic Analysis of LOSSAN in San Diego County

Projected results of prolonged Interruption of rail service:

- Increased congestion on I-5 and I-15
- Job losses could be 2,000 to 3,500 annually
- GDP loss could be \$200 to \$400 million per year
- Cumulative GDP losses in the billions of dollars
- Port tenants may relocate to another port with more favorable transportation connections



SANDAG's Commitment to LOSSAN

- 2021 Regional Plan \$7.2B
- Reimagine the rail corridor – Transit Leap Vision of improve safety, capacity, speed
- Fully double, track, 110mph, faster than car



Conceptual Rendering
of Transit Leap Train

Vulnerable Coastal Bluffs

DANGER
ACTIVE BLUFF
FAILURES

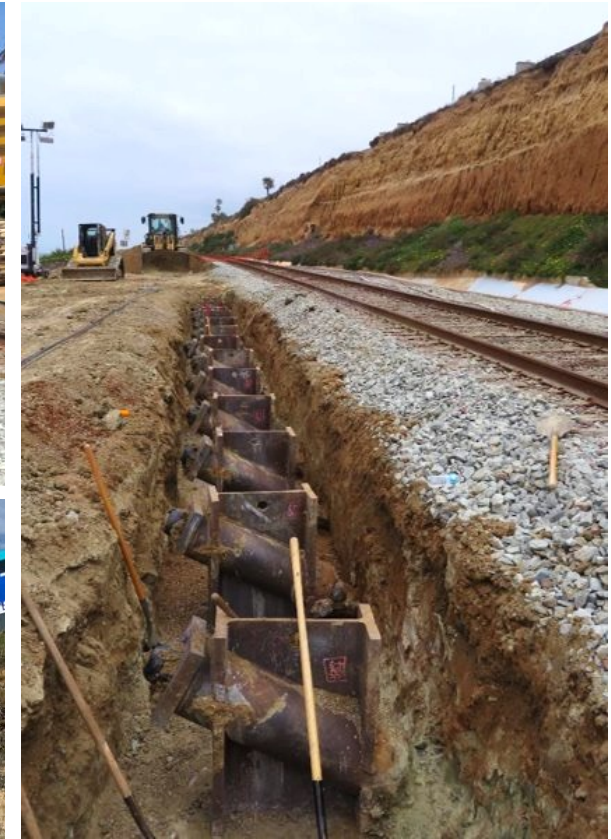
Vulnerable Coastal Infrastructure

6 inches

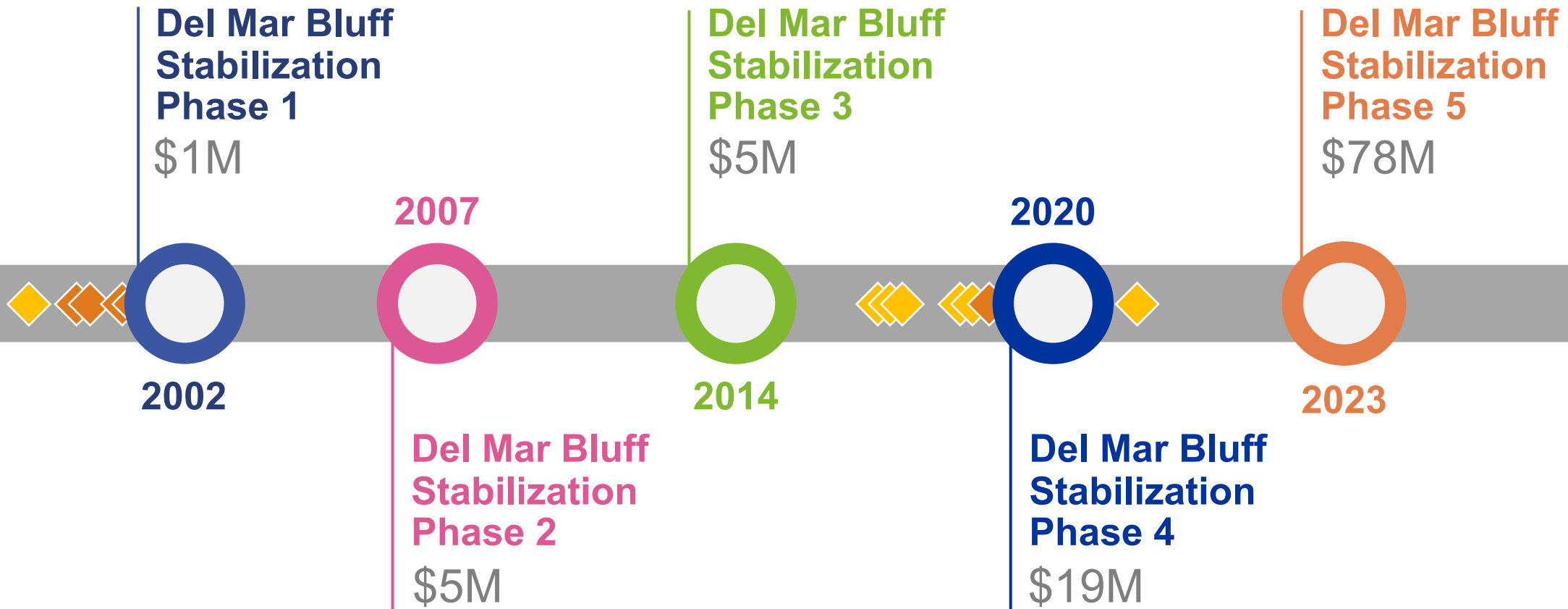
Average annual bluff retreat in Del Mar



Bluff Stabilization Efforts are Temporary



Bluff Collapse and Stabilization Projects Over Time



◆ Bluff collapse impacting rail service
1996, 2018, 2018, 2018, 2018, 2019, 2019, 2021

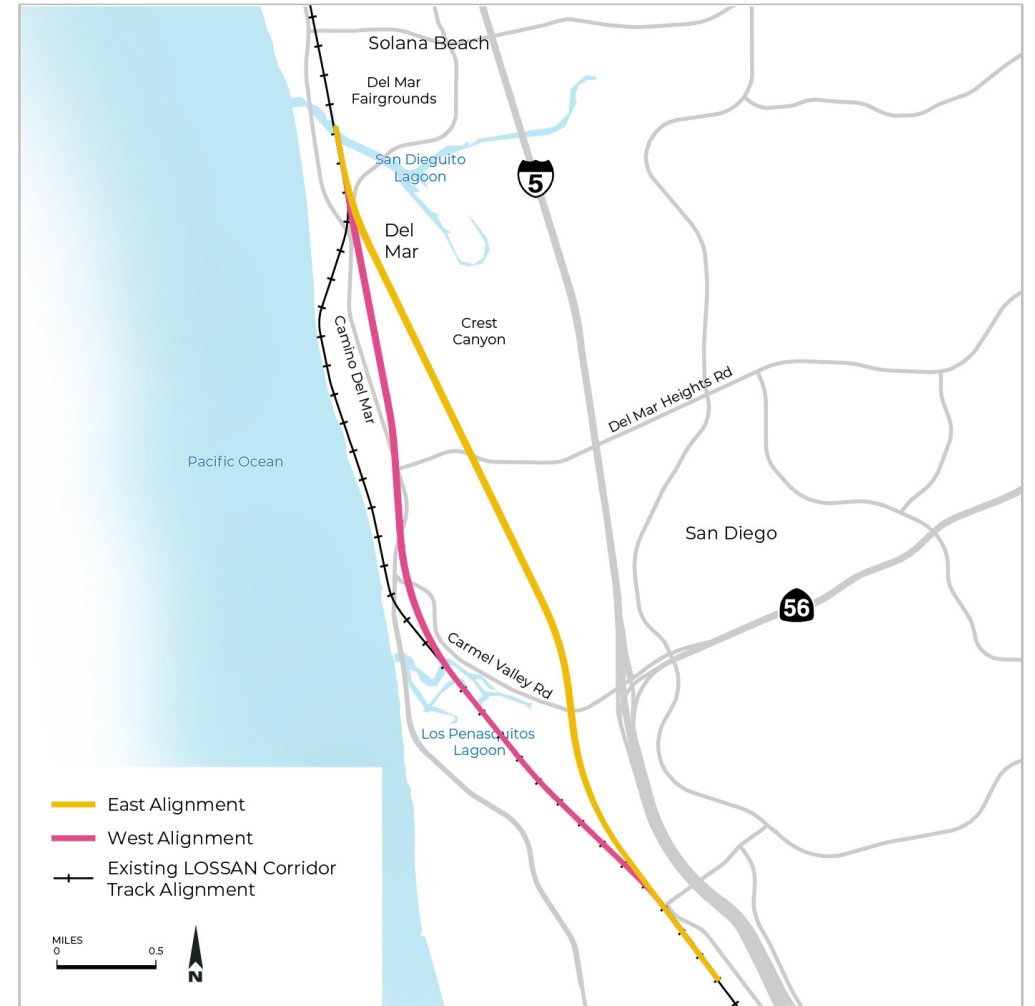
◆ Emergency Repairs
1998, 1998, 2001, 2001, 2019

A large, semi-transparent diamond-shaped graphic is centered on the page. It has a dark purple border and contains the text "DANGER", "ACTIVE BLUFF", and "FAILURES" stacked vertically in a light purple, sans-serif font. The background of the slide is a dark purple gradient with a faint, textured pattern of what appears to be a rocky or natural surface.

SANDAG's Plans and Commitments

Planning for a Permanent Solution

- Completed an alternatives analysis of potential realignments
- Confirmed tunnel is the best permanent option



San Diego LOSSAN Rail Realignment

Improvements:

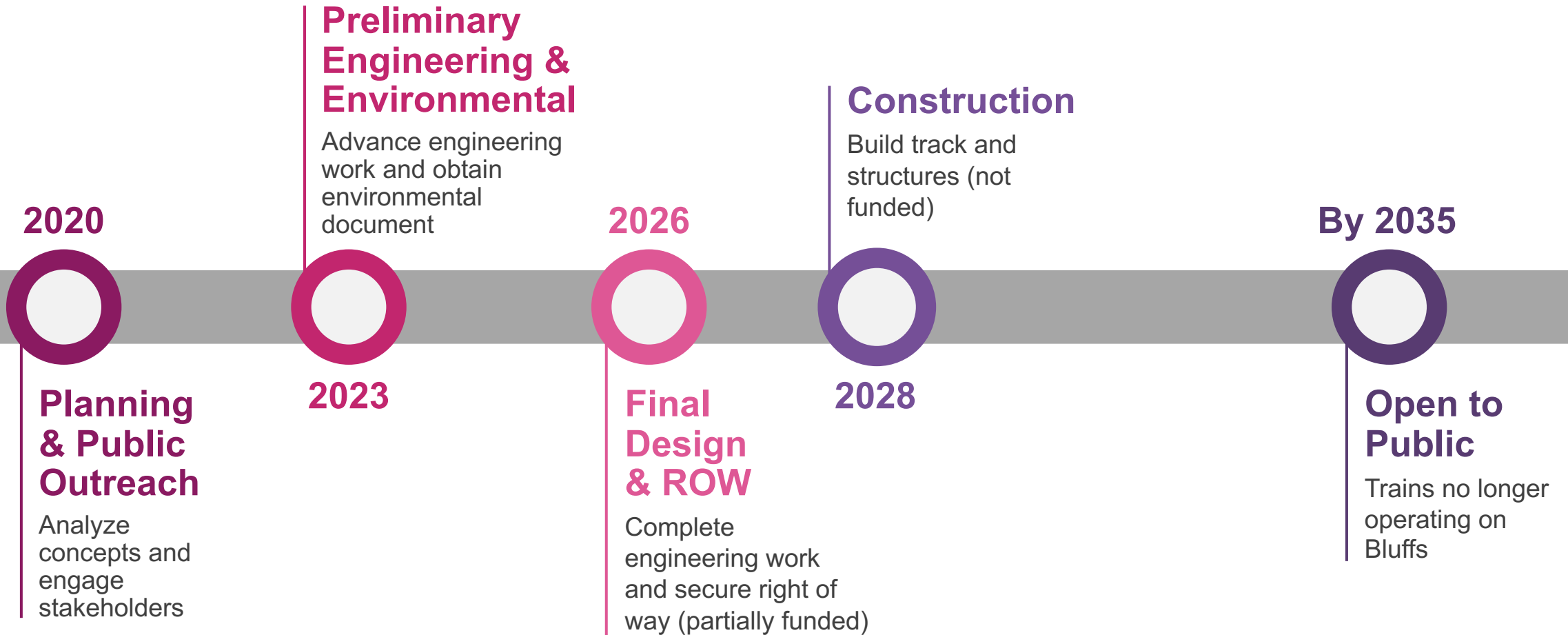
- Re-align tracks away from vulnerable coastal bluffs
- Construct double track through Del Mar and Los Peñasquitos Lagoon

Project Status:

- Project was awarded \$300 million in funding by the state
- Preliminary Engineering and Environmental Clearance now underway



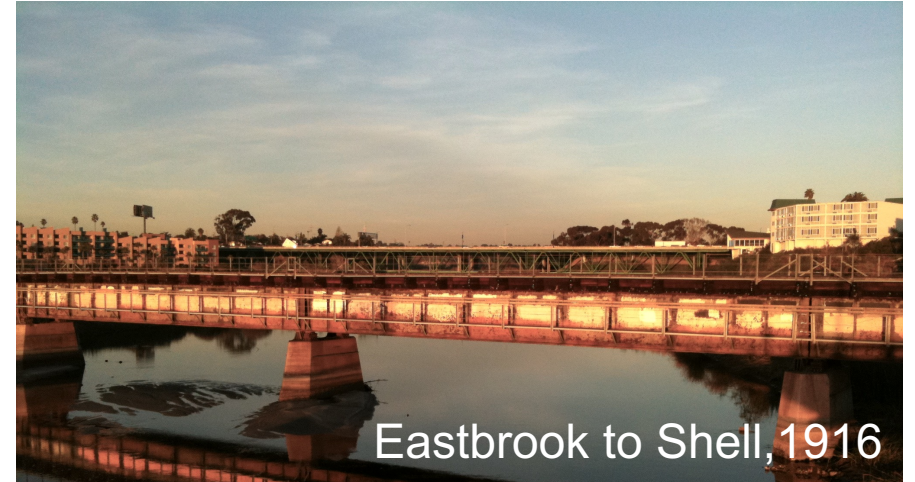
Project Timeline



Other LOSSAN Vulnerabilities in San Diego



Sorrento to Miramar



Eastbrook to Shell, 1916



Batiquitos Lagoon Bridge, 1942

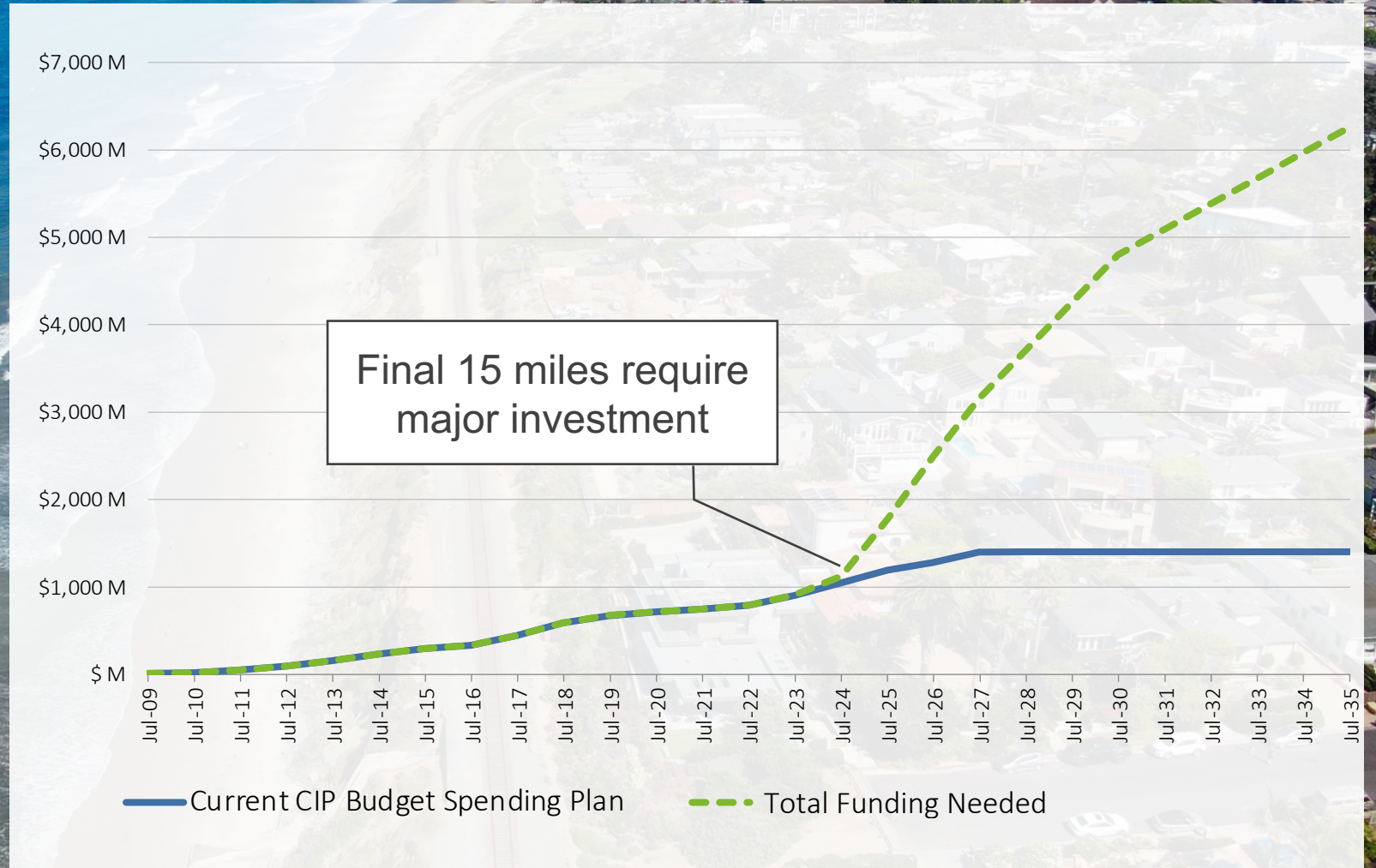


San Dieguito River Bridge, 1916

Progress and Funding Needs for San Diego

60 Total Miles

- 44.8 miles complete
- 5.8 miles, shovel-ready
- 3.9 miles in Environmental Phase
- 5.6 miles in Planning






Next Steps

- Change competitive funding priorities to be able to fund projects that can prevent a prolonged closure
 - Prioritize projects that improve resiliency to the impacts of climate change
 - Prioritize corridors the lack alternative rail routes
- Corridor-wide leadership and partnership to bring national attention and funds to LOSSAN



Stay connected with SANDAG

-  Explore our website
SANDAG.org
-  Follow us on social media:
[@SANDAGregion](#) [@SANDAG](#)
-  Email: danny.veeh@sandag.org

SANDAG