



*Photo: LA Times*

# Managing LOSSAN Corridor Geo-Hazards

Jonathan P. Stewart, PhD, PE, NAE

Professor, UCLA Samueli School of Engineering

# Types of Geo-Hazards

## Coastal landslides

- Weakly cemented rock
- Wave erosion



*Photo: Caltrans*



# Types of Geo-Hazards

Coastal landslides

Earthquake hazards:

- Soil liquefaction



*Photo: Malcolm Teesdale, NZ*

# Types of Geo-Hazards

Coastal landslides

Earthquake hazards:

- Soil liquefaction
- Landslides



*Photo: WSP*



# Types of Geo-Hazards

Coastal landslides

Earthquake hazards:

- Soil liquefaction
- Landslides
- Surface faulting



*Photo: GEER*

# Types of Geo-Hazards

## Coastal landslides

Earthquake hazards:

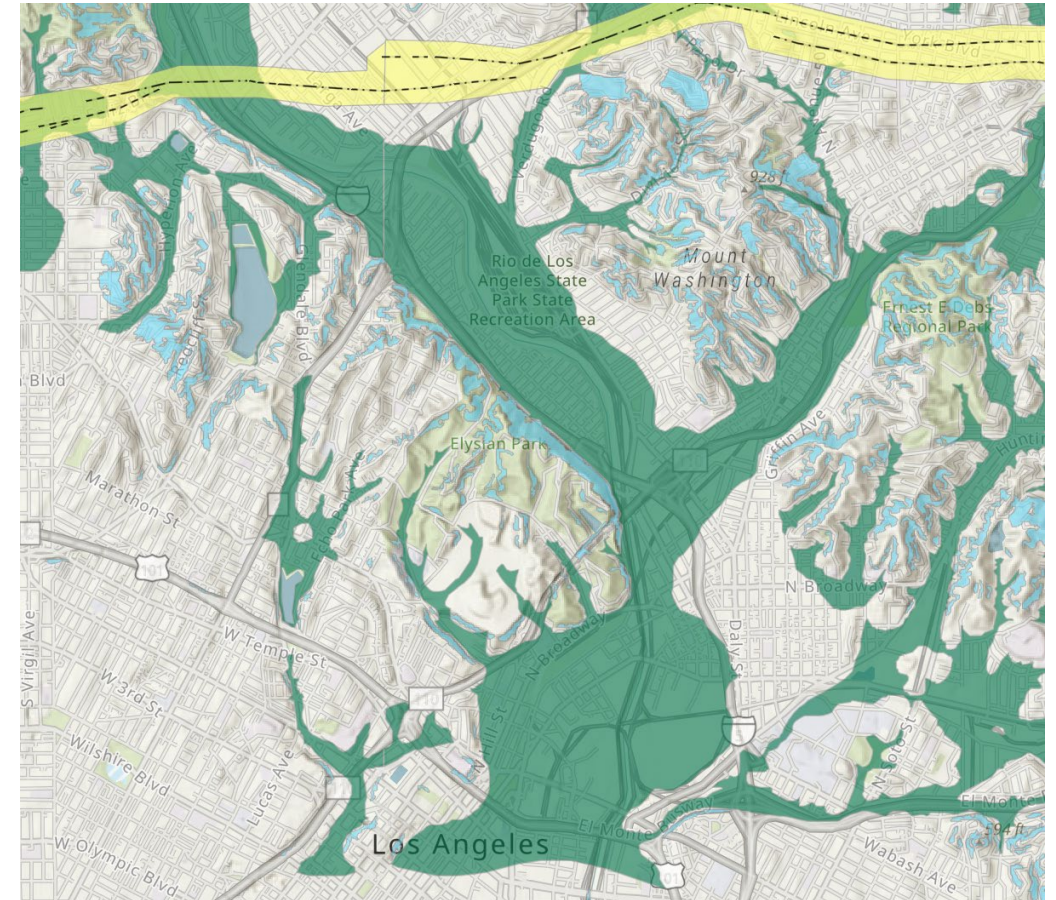
- Soil liquefaction
- Landslides
- Surface faulting



**Impacted** by climate change

# What can be done?

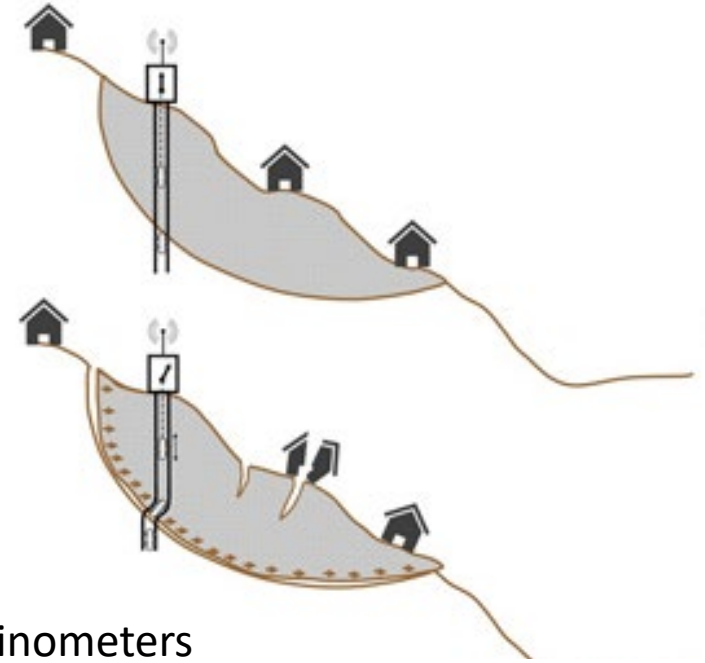
Hazard mapping: identifies potential locations of hazards



# What can be done?

Hazard mapping: identifies potential locations of hazards

Instrumentation



Inclinometers



Accelerometers



# What can be done?

Hazard mapping: identifies potential locations of hazards

Instrumentation

Key is to identify hazards in advance