

Senate Subcommittee on LOSSAN Rail Corridor Resiliency

Oversight Hearing Southern California Passenger Rail Service – Performance and Operations

Tuesday, August 13

2 p.m.

Presenter: Kyle Gradinger, Division Chief – Caltrans Division of Rail



Caltrans Division of Rail Overview

Core Functions:

- Lead Statewide Rail Planning
- Oversee Intercity Passenger Rail Program
- Own, manage, and procure the state's passenger rail fleet

Key Partners:

- California State Transportation Agency
- Intercity Passenger Rail Joint Powers Authorities
- Amtrak
- Host Freight Railroads (Union Pacific, BNSF Railway)
- Commuter Railroads
- California High Speed Rail Authority
- Regional Agencies

Rail Planning – Caltrans Core Four Principles



- **Safety**



- **Equity**

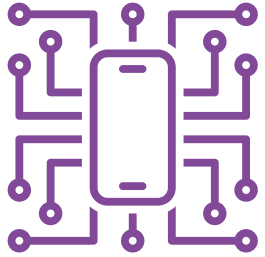


- **Climate Action**

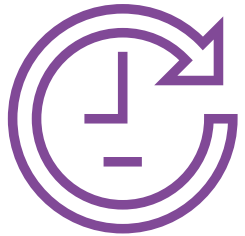


- **Economic Prosperity**

Rail Planning – A Strategic Vision for California’s Rail Network



- Integrated Statewide Network



- Coordinated Schedules



- Customer Focused

Outcome:

A network that is cost-efficient to deliver and operate

Rail Planning – Corridor Identification and Development Program

- Corridor ID Program (CIDP):
- Develop a sustained, comprehensive intercity passenger rail planning and development program
- Unlock a pipeline of federal funds for California



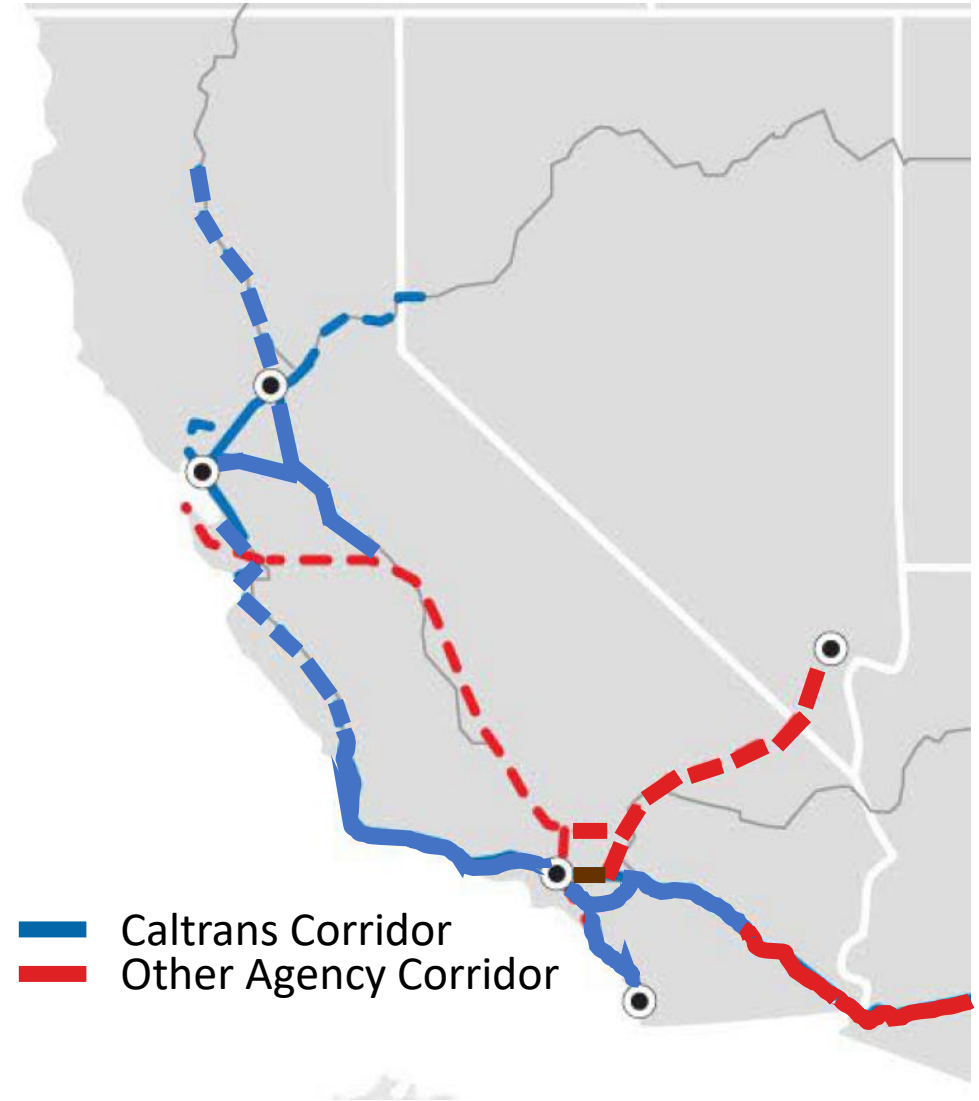
Rail Planning - Corridor Identification and Development Program

Caltrans is Project Sponsor for:

- LOSSAN
- Central Coast Corridor
- Coachella Valley Rail Corridor
- Capitol Corridor
- San Joaquin Valley Corridor

Additional CIDP Corridors in California:

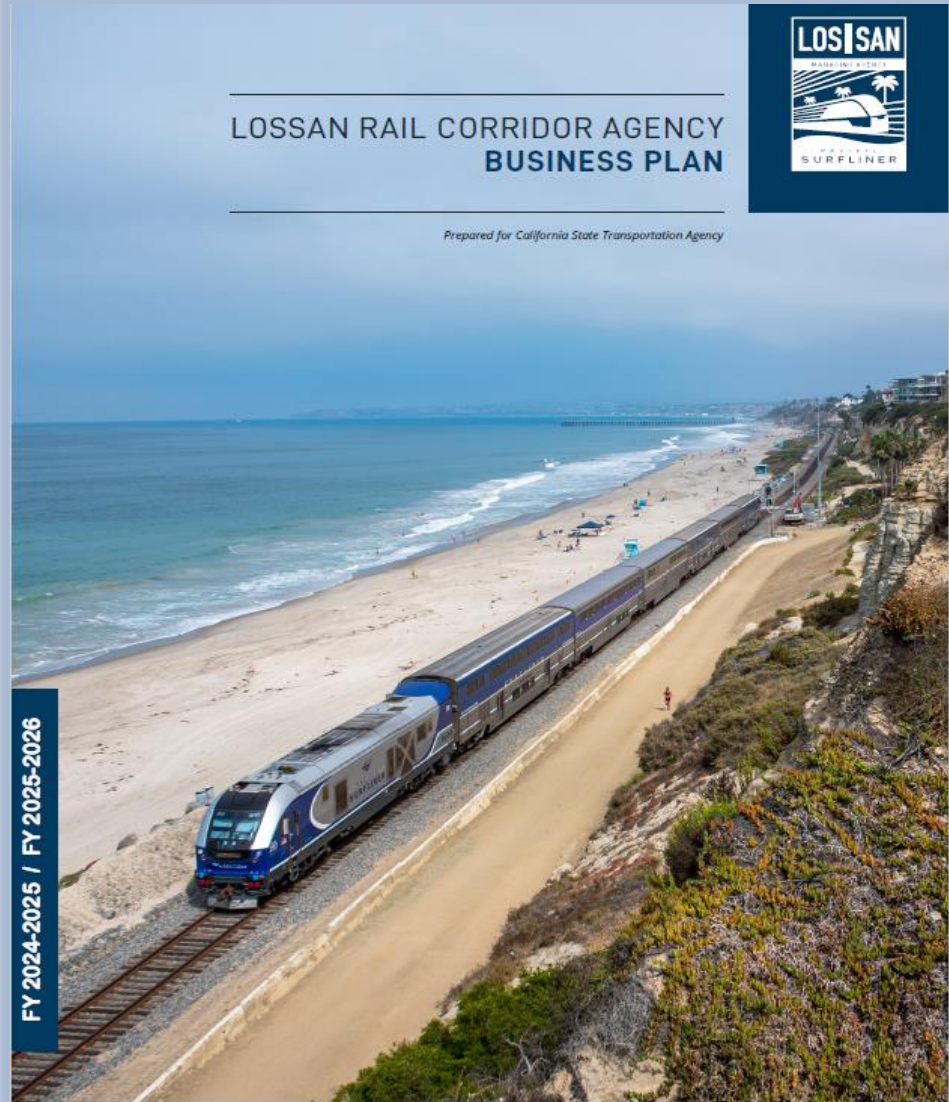
- California High-Speed Rail Phase 1 Corridor
- Brightline West High-Speed Rail Corridor
- High Desert Intercity High-Speed Rail Corridor
- Daily Sunset Limited Service



Rail Planning - Corridor Identification and Development Program

Grant	Step 1: Scoping the Service Development Plan	Step 2: Preparing or Updating Service Development Plan	Step 3: NEPA / Preliminary Engineering
Funding	Up to \$500k / 0% state match	\$X / 10% state match <i>(\$X determined during Step 1)</i>	\$X / 20% state match <i>(\$X determined during Step 2)</i>
Scope	Using Service Development Plan SOW framework, sponsor develops scope, schedule, and budget for Corridor SDP , accounting for work on-going and/or undertaken to date	Sponsor develops a service development plan in accordance with Step 2 SOW	In coordination with FRA, sponsor completes preliminary engineering for capital projects Sponsor completes environmental review in coordination with FRA for capital projects

California Intercity Passenger Rail Program



Fleet – Management and Deployment



- Fleet Ownership and Procurement
- Fleet Planning
- Recent and Ongoing Activities

Fleet – Industry Leadership



RAIL FLEET CONSORTIUM



Zero-Emission Working Group
Kick-off meeting

June 23, 2021



San Joaquin Joint Powers Authority

LOS|SAN

CAPITOL CORRIDOR

CALIFORNIA High-Speed Rail Authority

Caltrans

sb cta

ACE

SONOMA-MARTIN SMART AREA RAIL TRAIL

Caltrain

METROLINK

NORTH COUNTY TRANSIT DISTRICT

Oregon Department of Transportation

WSDOT

STATE OF NORTH CAROLINA DEPARTMENT OF TRANSPORTATION

CT rail

Downeaster

DRPT

Illinois Department of Transportation

BART

VIA Rail Canada

Metra

MARC

brightline

MOT MARYLAND DEPARTMENT OF TRANSPORTATION

Fleet – Innovation



California Intercity Passenger Rail Zero-Emission Strategy

Caltrans | 2022

