



California Public Utilities Commission Rail Safety Division



Roger Clugston
Director, Rail Safety Division

Senate Transportation Committee

Senate Subcommittee on LOSSAN Rail Corridor Resiliency

August 13, 2024



Rail Safety Division (RSD) Three RSD Branches

- Rail Crossings and Engineering Branch – oversight of 12,000 + at-grade crossings.
- Rail Transit Safety Branch – oversight of 15 Rail Transit Agencies.
- Railroad Operations and Safety Branch – oversight of freight, commuter, and short line railroads, consisting of 9,855.7 track miles.

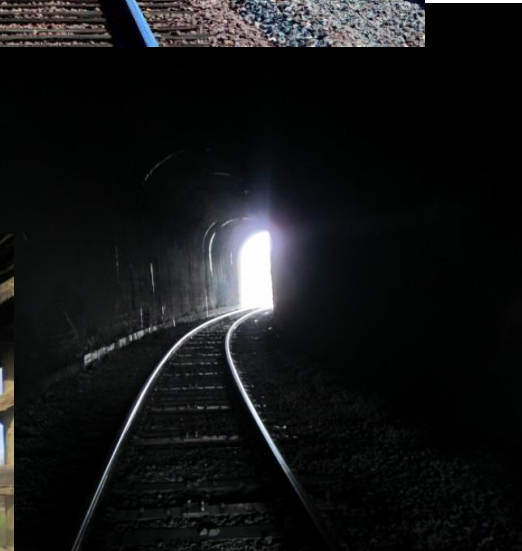
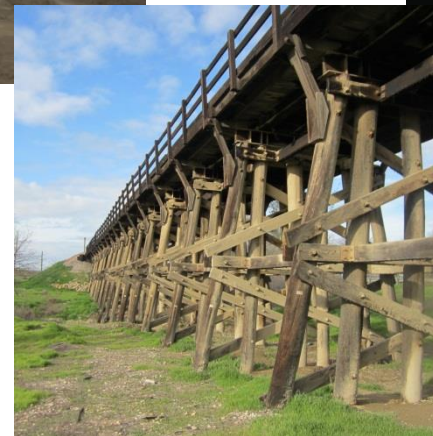




Railroad Operations and Safety Branch (ROSB)

Responsible for state and federal safety oversight of heavy rail freight, commuter and short line railroads:

- Tracks and structures (bridges, tunnels)
- Operations
- Rail cars and locomotives
- Signals
- Hazardous materials





ROSB Mission Statement

To ensure that California communities and railroad employees are protected from unsafe practices on freight and passenger railroads by promoting and enforcing rail safety rules, regulations and inspection efforts; and by carrying out proactive assessments of potential risks before they create dangerous conditions.





RSD / ROSB Safety Concerns



- Public safety near and along railroad tracks
- Railroad employee safety
- State and Federal regulatory compliance
- Public trespassing
- Homeless encampment right of way encroachment
- Unregulated safety conditions and risks
- Grade crossing - vehicle queueing
- Grade crossing - maintenance
- Railroad bridge integrity
- Railroad tunnel integrity

Safety Solution examples:

- Thorough inspections and incident investigations
- Safety based Initiatives and projects
- Looking beyond the regulations
- Risk Management Status Reports (RMSR)
- Focused railroad inspections
- Operation Lifesaver presentations



ROSB Inspectors and Leaders

ROSB inspectors and supervisors are also certified discipline specific Federal inspectors:

- 1 - Program Manager - supervises and leads the branch.
- 1 - Program and Project Supervisor - oversees initiatives and admin staff.
- 4 - Superintendents - supervise and each lead one of four regions: North, Coast, Central and South.
- 5 - Senior Inspector lead positions – assist Superintendents; 1 is a Special Projects coordinator.
- 8 - Track inspectors.
- 4 - Signal inspectors.
- 6 - Operations inspectors.
- 7 - Equipment inspectors.
- 7 - Hazmat Inspectors.
- 2 - Bridge Inspectors.
- 2 – Positive Train Control (PTC) Specialists.





ROSB Inspectors and Leaders



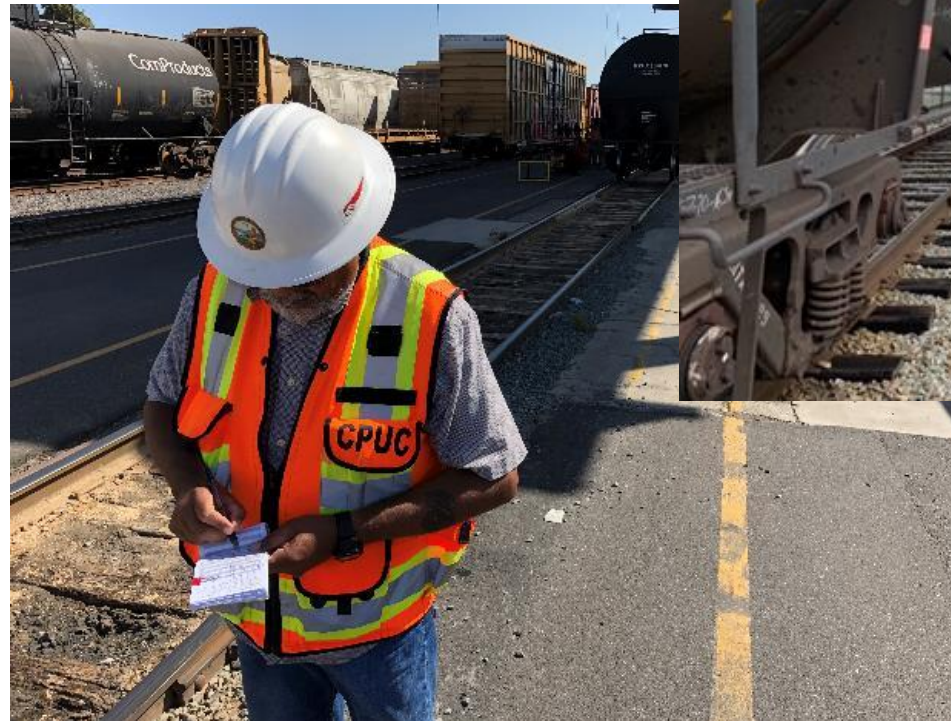
Railroad Discipline	Years of inspection experience as a railroad employee	Years of inspection experience as a CPUC employee	Combined experience
12 Hazmat Inspectors	275	125	400
9 Track Inspectors	250	86	336
4 Signal Inspectors	47	30	77
12 Operations Inspectors	281	91	372
8 Equipment Inspectors	103	44	147
1 Bridge Inspector	37	10	47
Total Years Experience	993	386	1379



ROSB Statewide Field Inspection Days

January 2022 through July 24, 2024

- Track – 2,545
- Signal – 690
- Operations – 2,052
- Equipment – 1,569
- Hazmat – 2,382
- **Total: 9,238 inspection days**





ROSB - LOSSAN Inspection Days January 2022 – July 2024

Track – 62
Signal – 32
Operations – 57
Equipment – 69
Hazmat – 28
Bridge – 46





LOSSAN - Hazmat Transportation

- Hazmat transportation on the LOSSAN Corridor is predominantly Liquid Petroleum Gas (LPG) tank cars. Interchange with Mexico at San Ysidro.
- Permanently closed San Onofre Nuclear Generating Station - transporting soil that is placarded as radioactive but is classified as a surface contaminated object (SCO) - a solid object which itself is not radioactive, but which has radioactive material distributed on its surface.
- Some military material shipments to Marine Corps Base Camp Pendleton - Stuart Mesa Yard.





LOSSAN - Bridges

Los Angeles (Union Station LA) to San Diego
 (San Diego Convention Center BNSF San Diego
 Subdivision MP 269)

Railroad	Subdivision	Total bridges
BNSF	San Bernardino	33
Metrolink	Orange	37
NCTD	Coaster	27
BNSF	San Diego	1
		Grand Total
		98

San Luis Obispo (US 101 at UP Coast Sub MP
 247.6) to Los Angeles (Union Station LA)

Railroad	Subdivision	Total bridges
UP	Coast	4
UP	Santa Barbara	72
Metrolink	Ventura	21
Metrolink	Valley (9 miles)	7
Metrolink	Multiple (3 miles)	6
		Grand Total
		110

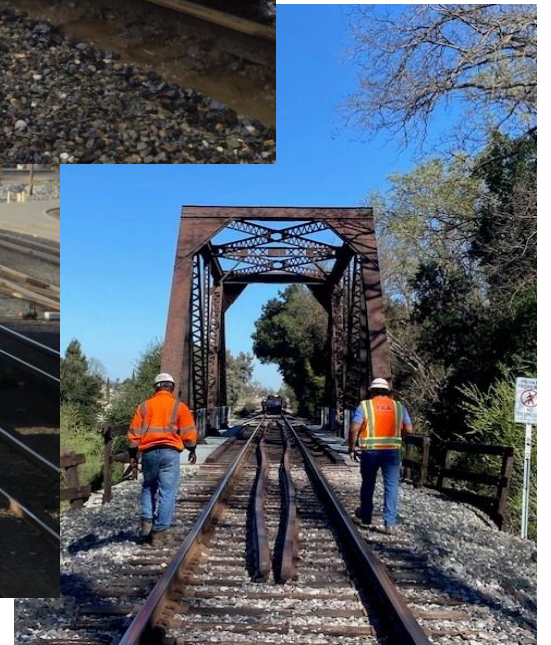


RSD / ROSB incident investigation protocol

Initial incidents reported to Cal OES, relayed to RSD, regarding service interruptions, including:

- Derailments, employee and public fatalities, injuries
- Vehicle vs. train
- Trespasser vs. train
- Hazmat incidents
- Fires, floods, washouts

ROSB staff investigates incident sites as quickly as possible, taking measurements, photographing evidence, and gathering relevant operational and maintenance documentation, review inspection practices and procedures, verify state and federal regulatory compliance, and cite non-compliances, and identify any perceived or real risks.





Questions?

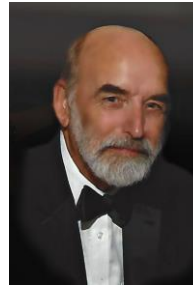




Thank you!

For Additional Information please contact me or visit our webpage:

<http://www.cpuc.ca.gov/rail/>



Roger Clugston
Director

Rail Safety Division
California Public Utilities Commission
505 Van Ness

San Francisco, CA 90013
roger.clugston@cpuc.ca.gov
(213) 308-7698